

# MMTS Results Software User Guide

## Introduction:

This software allows the user to download and view the results from any event that has been run by the Jersey Motorcycle and Light Car Club timing team.

The instructions below are the basics and over time will be updated to become a full user manual.

The software is evolving all the time and we are working closely with the developer on many of these changes. Due to this, sometimes when you load the software, it will display a prompt on the opening screen informing you that an update is available. Clicking on this message will automatically update your installation with the latest version.

It is also possible to bring this software to any JMCLCC event on a WiFi enabled laptop and when in range of the timing hut, the software will show the event and the results as they are happening in real time.

## IMPORTANT NOTE FOR WINDOWS XP & VISTA USERS:

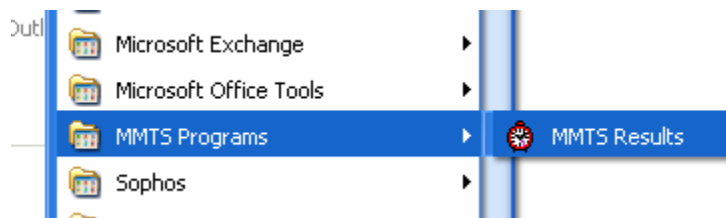
When the software is used for the first time, you will receive a security prompt from the Windows firewall, you will need to allow this traffic to allow the software to work correctly.

## Installation:

Install the software by running the downloaded program. It is recommended to accept all the defaults at this point.

## User Guide:

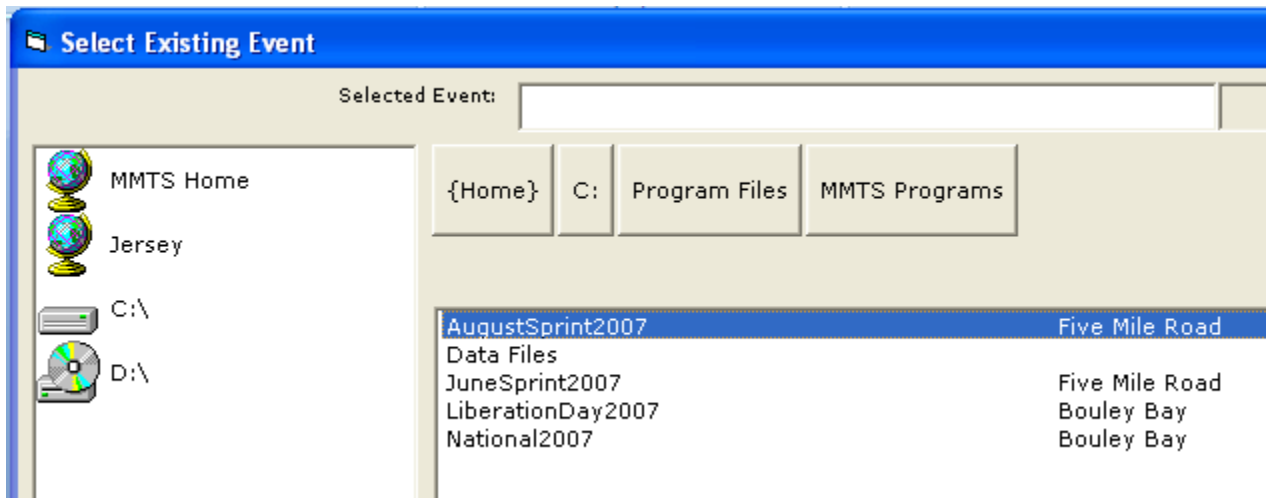
Load up the software by clicking on the MMTS results icon in the start menu



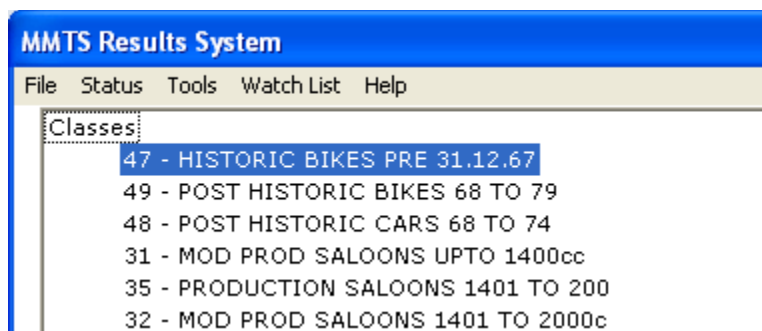
Once the software has loaded, click on Select Loaded Event



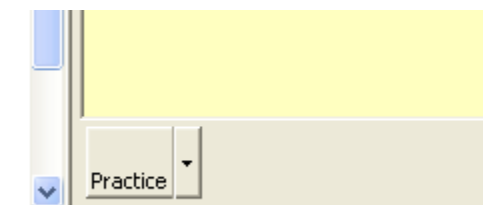
Click on Jersey and then once the screen on right has refreshed, select the event you would like to open and click continue. (The event database will be downloaded to your PC)



Double click on the word "classes" to show all the classes at the event



Click on the drop down shown below to change the displayed times from practice to run/event or even run off for a National.



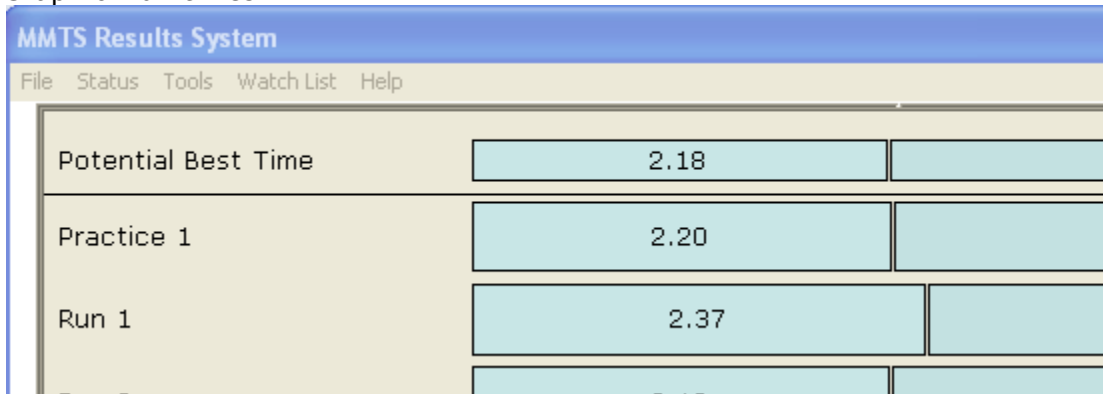
Double click on a competitor to show competitor information and break down of split times

M2	Paul Traylen	10.99	10.8
M14	Ben Le Lay	11.77	11.6
M148	Sam Hunt	11.78	11.5

Click on the competitor name on the screen below to show a graph of the times including a potential best time which is calculated by piecing together the competitors best sector times.

M14 Ben Le Lay	
Suzuki Gsxr	
64ft	Speed
-----	
Practice	
2.20	127.48
-----	
Run	
2.37	128.64

Graph of run times:



The screenshot shows the MMTS Results System interface. At the top is a blue header with the text "MMTS Results System". Below the header is a menu bar with the items "File", "Status", "Tools", "Watch List", and "Help". The main content area is a table with the following data:

Run Type	Time	Other Data
Potential Best Time	2.18	
Practice 1	2.20	
Run 1	2.37	

Clicking on "By Eligibility" will allow you to show the results by Vehicle type or by competition. E.g. Florida Pools.

- Run off
- Championships etc
- By Eligibility
  - All Motorcycles
  - All Cars
  - Karts
  - Florida Pools
- By Club
- Overall

Clicking on overall allows times to be ordered by split time or terminal speed.

- Florida Pools
- By Club
- Overall
  - By Time
  - By 64ft Time
  - By Speed Speed
  - By Time
- Competitors
- To Be Checked

**Author: Ben Le Lay – ben@jerseymail.co.uk**

**Date: 19/08/2007**

**Document Version: 1.1**